

Highlander Research & Education Center, 2015

# Celebrating Generations to Come

Final Report







# IN GRATITUDE

Dear Friends,

What a glorious set of accomplishments Highlander's Generations to Come Capital Campaign celebrates! We trust you join us in lifting up all that your great generosity and passionate commitment to social and economic justice have made possible. We raised a total of \$2.32 million. Thank you!

Construction on our new LEED-certified Lilian Johnson Lodge is in full swing, and we will cut the ribbon on September 26 at our Homecoming. We have expanded Highlander's total acreage to 186, including a well-built log home, apple orchard and beautiful woods with trails we are extending each year. We have addressed structural and energy issues in our current buildings through repairs, renovations and upgrades. We have overhauled our kitchen with much needed new equipment and a bright and colorful work environment for staff. We will be repurposing buildings to move the library and resource center closer to the workshop center so that it will be more accessible to workshop participants.

In many ways, this capital campaign was the little engine that could as we navigated difficult terrain and challenging circumstances. There was the recession of 2008 and its immediate and lingering impact. A structure and energy audit left us a bit daunted by the amount of work needed, and from that we restructured the campaign, developing a comprehensive site plan to reconfigure the balance of new building, repurposing and renovation. New statewide building codes for fire suppression in rural counties added a curve ball late in the game as all options were expensive and had impact on us and our neighbors. We engaged in a careful, values-based determination for resolution and are moving forward with bringing a municipal water line to Highlander.

The added expense of new water lines prevents us from establishing a maintenance endowment at this time. The benefits provided by these lines are enormous and timely, and we are committed to developing a maintenance endowment in coming years.





*Left: Diana Lee, Hollis Watkins, Melody Reeves, Henry Allen, April Caddell and Pam McMichael gave recognition and thanks to the many campaign supporters and accomplishments. We were especially honored to be joined by emeritus board member Hollis Watkins, who was moved to lead the crowd in songs he has been singing since his days with SNCC. Seeds of Fire alumni joined voices with Civil Rights Movement veterans, and friends from across the country joined the perfect blessing to the start of construction on the Lilian Johnson Lodge.*

## AND CELEBRATION

Our profound thanks to you and the Highlander community of donors, with special appreciation to the volunteer Steering Committee of the campaign and the amount of time and thought and energy they gave: Committee Members Millie Buchanan, Doug Gamble and Elnora Williams, and former Board Chair Roz Pelles.

Highlander has always been a place and an idea, intertwined and inseparable. The successes of this campaign ensure that the physical infrastructure of Highlander continues to provide the spaces for the processes that nurture, feed, connect and help build movements in the south, country and world.

Come walk the woods, sleep in the new lodge, eat meals from the new kitchen, explore the archives, and sit in that circle of rockers that build and sustain relationships and inspire strategies and action for social and economic justice.

With profound gratitude and in solidarity,

Diana Marie Lee  
Chair, Highlander Board of Directors

Henry Allen  
Chair, Generations to Come Campaign  
Highlander Board of Directors

Pam McMichael  
Executive Director





# CAMPAIGN ACCOMPLISHMENTS

## Construction in Full Swing!



L to R: Exterior walls are up on the Lilian Johnson Lodge; rendering by Elizabeth Eason Architects; Contractor Tim McGinnis (on right), and his assistant Bart Miller have worked through harsh winter weather to keep the project moving forward.



The new LEED-certified, energy efficient Lilian Johnson Lodge provides gathering spaces comfortable for groups of various sizes, including a large indoor common room, screen porch and outside deck with plenty of couches, work tables and Highlander rockers. The kitchen-dining area in the common room allows guests to cook and serve meals as desired. Twelve bedrooms house up to sixteen people in a range of single, double and family rooms. Bathrooms maximize privacy and comfort. Laundry facilities with commercial grade appliances enable staff to efficiently manage cleaning and transition times between guests. State of the art fire safety and suppression features include hydrant, sprinkler and smoke detection systems, and easy evacuation routes.

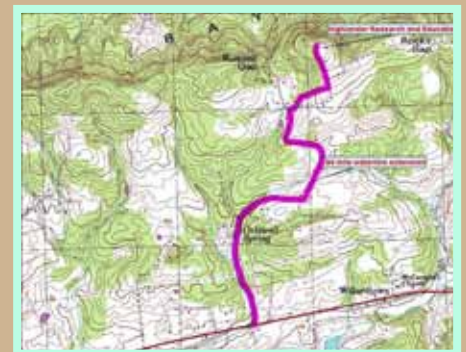
### Investment in Infrastructure & Maintenance:

**Installation of new municipal water line** supplies the hydrant and sprinkler systems in our new building as well as providing for future needs.

**Addition of second well** increases water supply for existing buildings.

**Electrical upgrades** for existing buildings across the site and **hard-wired smoke detection** systems in all lodgings.

**New roofs** now cover the Main Office, Bays Mountain House, Horton House and Cultural Pavilion.



Above: Route of new municipal water line from Hwy. 70 to the Lilian Johnson Lodge.

## Purchase of Bays

### Mountain House and

**80 acres** for use in small-scale, extended-length residencies, meeting space, and housing for staff and guests. Trails, meadows, springs and woods replenish the soul, and provide models and learning ground for sustainable stewardship practices, while protecting Highlander from encroaching development.



## New Septima Clark Learning Center

Renovating (and perhaps relocating) the Resource Center (including library and archive) enables us to better meet the diverse needs of workshop participants, community organizers, researchers, staff, interns, and visitors. Developed over the course of our 80-year history, the Resource Center remains a key asset in our educational programs, and has grown to include a unique range of services and resources.



**Renovated Kitchen** with new stove, dishwasher, pot-sprayer, shelving and countertops enables greater efficiency in meal preparation and cleanup. We were even able to put down a new floor and repaint the entire kitchen!

**Renovated Child Care Room** is a bright, inspiring space for multiple uses: childcare, meetings, and family lodgings.

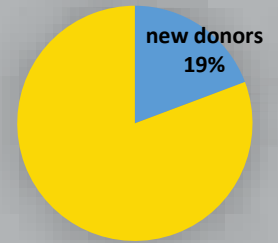
**Cultural Pavilion** sanded and stained to completely protect it from damage by moisture and sunlight.



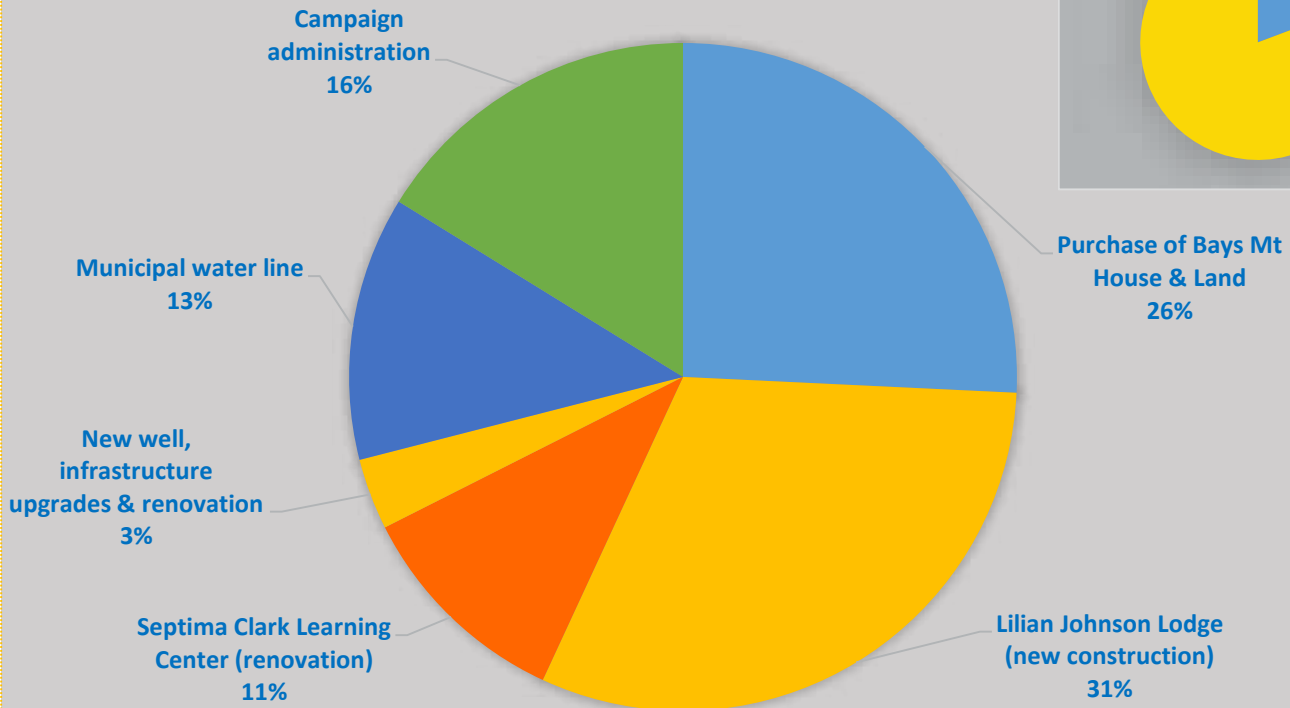
# CAMPAIGN FUNDS RAISED \$2,320,000.

Board Gifts \$52,080.  
Campaign Committee Gifts \$139,181.

306 Total  
Campaign Donors



## CAMPAIGN EXPENDITURES



## Gratitude for the History of Work to Build this Campaign

Most of Highlander's facilities (except the Office and Bays Mt. House) were built in the early 1970s when the organization moved to New Market. Highlander was still so controversial at the time that they had trouble finding a contractor to build for them. The only one they could find built vacation homes in the Smokies from prefabricated kits. The kits were multi-sided structures that came in two sizes – a large version, which was used for the Workshop Center, and a small version, which was used for the Round House, the Library, and the Horton House.

By the late 1990s, the prefab kits were near the end of their 30-year expected life-spans and their materials were simply wearing out. Like other non-profits with limited resources and buildings to maintain, Highlander was faced over and over again with choosing between putting money into programs and putting money into maintenance. Staff and Board stretched resources as far as possible but inevitably (and for all the right reasons) programs took priority and maintenance suffered.

In 2001, Highlander began a series of sustained drives to repair and replace structures where needed, and to improve their energy efficiency. We are profoundly grateful to the volunteers, board and staff who worked tirelessly during the period of 2001 – 2010 to raise funds and make the improvements listed below, upon which the Generations to Come campaign has been built. Donors during this period are listed in this report. Special thanks to Charlie Biggs and Anasa Troutman for coordination in these early phases.

- Repairs to Kentucky House, Barn, Well House
- Installation of elevator in Workshop Center, and structural reinforcement of Center walls
- Frame-out rebuilding of Horton House
- Vegetable garden and flower beds established

# C A M P A I G N   G I F T S



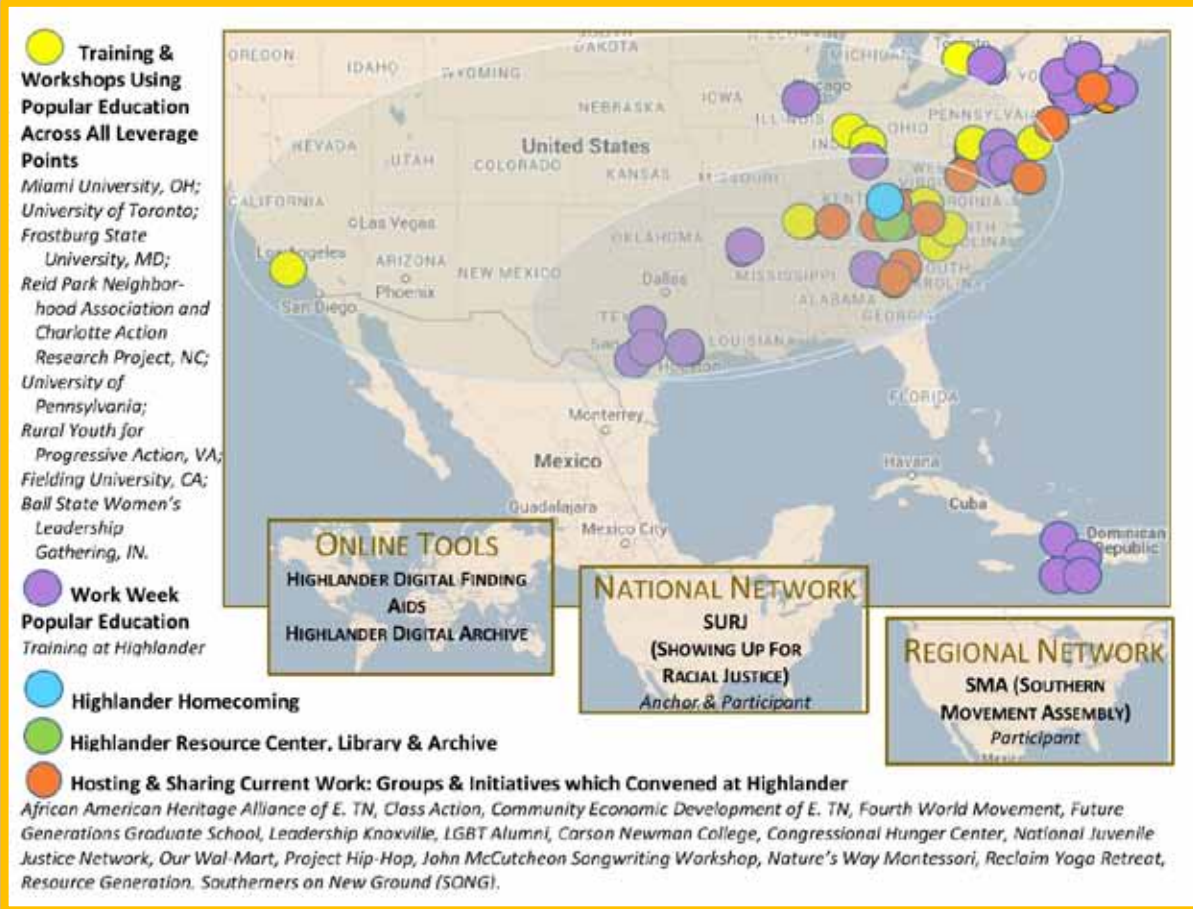
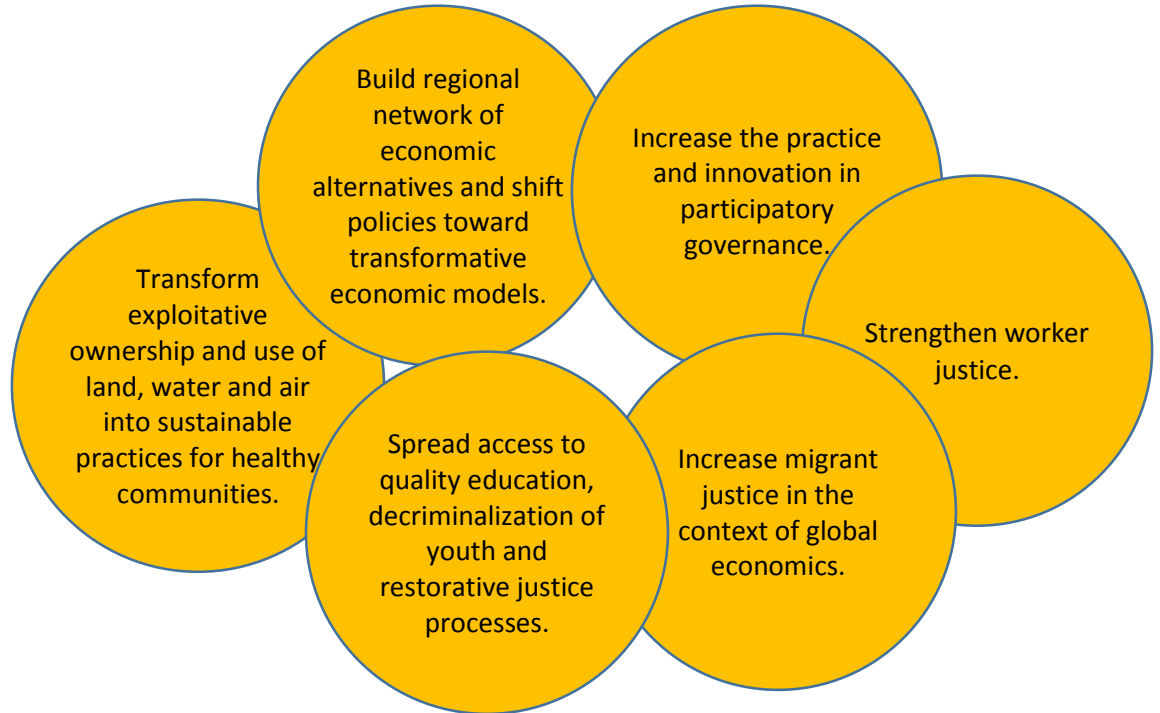
**Campaign Gifts that Nurtured Growth of Highlander’s Generations to Come Capital Campaign**  
*Gifts of every size play a vital role in the health of Highlander’s future*

● 5 Gifts \$200,000 - \$400,000	● 6 Gifts \$50,000 - \$74,999	● 9 Gifts \$10,000 - \$14,999
● 1 Gift \$100,000 – 199,999	● 3 Gifts \$25,000 - \$49,999	● 14 Gifts \$5,000 - \$9,999
● 1 Gift \$75,000 - \$99,999	● 7 Gifts \$15,000 - \$24,999	● 35 Gifts \$1000 - \$4,999
		● 226 Gifts up to \$999

# Impact: the leaders, organizers, communities and movements that the *Generations to Come* campaign supports

Highlander’s work flows in a continuous cycle, from our work in communities with organizations and individuals, to our gatherings and workshops at Highlander, and back again with communities and organizations on their home ground. We identify six points of leverage to build power where the current moment and our popular education methodologies converge to create great potential for justice and equity. The maps on the following pages give an overview of Highlander’s work in 2014: who we worked with, where, and leverage points our work addressed.

**Leverage Points For Highlander’s Work**



**Popular Education, Trainings and Workshops Across All Leverage Points, 2014**

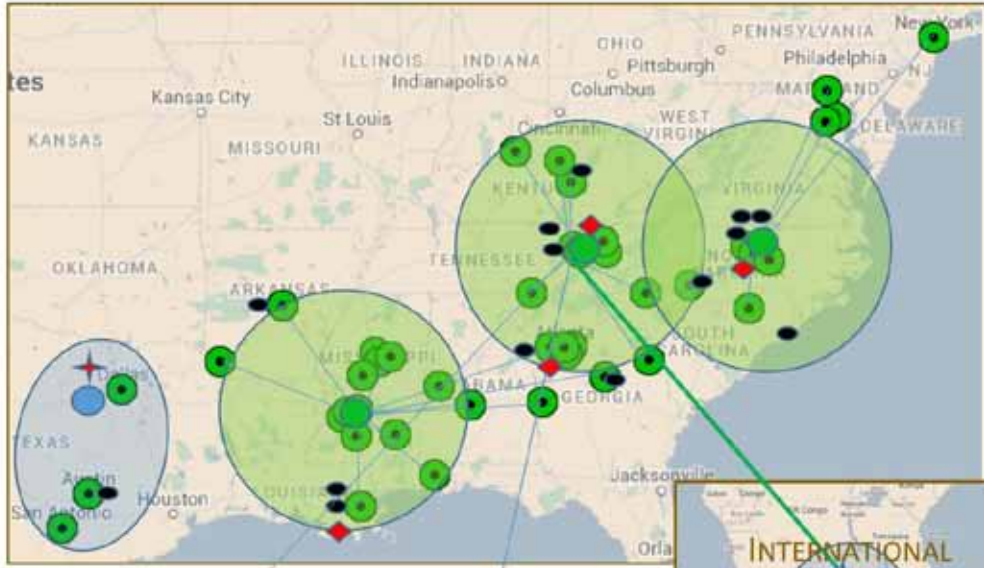


**Zilphia Horton Cultural Organizing Project (ZILPHIA)**  
 Intensive Training at Paul Quinn College, Dallas, TX with ZILPHIA Partner Fahari Institute

**We Shall Overcome Fund (WSOF) Strategic Gatherings:**  
 Raleigh, NC  
 Knoxville, TN  
 Jackson, MS

**WSOF Partners for Strategic Gatherings:**  
 Alternate Roots  
 Junebug Theatre  
 Fruit of Labor  
 Ensemble and Black Workers for Justice  
 Appalachian Community Fund

**WSOF network of Project Grantees (2010 – 2014)**



**NATIONAL NETWORK**  
 ART, CULTURE & SOCIAL JUSTICE NETWORK

**ONLINE TOOLS**  
 ZILPHIA PROJECT CULTURAL ORGANIZING ONLINE TOOLS

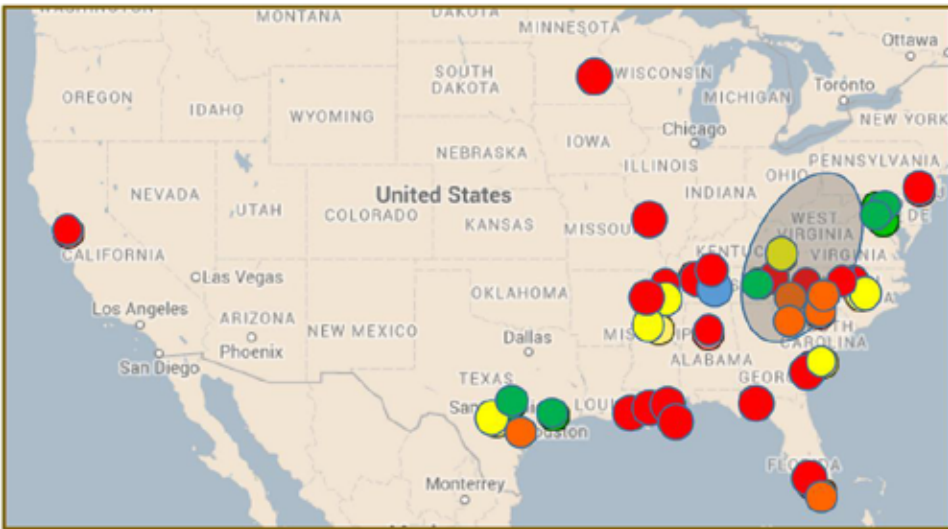
**INTERNATIONAL COLLABORATION**

**ZILPHIA PROJECT AND KBA ARTIST COLLECTIVE**  
 (Leaders from Southern African Social Forum)  
 Development of International Cultural Organizing Curriculum Comic Book to be translated in French, Swahili, Spanish and English.

**2014 WSOF Project Grants**  
 Project South; The Women's Ctr.; Derrick Brown; Alejandro Guizar; Tela L. Love; The Arts Center; Nia Urban Ministries; Pearl Forbes; Friends of Masjid Templars Cultural Center; Umoja Abdul Ahad; Working Narratives; Kristi Pappailier; Crystal Tennille Irby; Women's Health & Justice Initiative.

Work Across All Leverage Points Through Cultural Organizing Methodology, Training and Practice, 2014

Work Across All Leverage Points Through Youth and Intergenerational Leadership Development, 2014



**Children's Justice Camp** (at Highlander)  
**Greensboro Justice Fellowship**  
 Marianela Acuña-Arreaza  
 Kaitlin Mallick  
 Braden Latham-Jones  
 Elmis Navarro  
 Blain Snipstal  
**Anchor, Support Networks**  
 STAY (Stay Together Appalachian Youth)  
 SEAL (Supporting Emerging Appalachian Leaders)

**Seeds of Fire (SOF) Youth on the Move Training** (at Highlander) 72 participants from 15 organizations

<i>New Orleans Center for Creative Arts</i>	<i>Kids RETHINK New Orleans Schools</i>
<i>Out of the Shadows</i>	<i>Service Learning Fellowship</i>
<i>Youth Empowered Solutions</i>	<i>Break Out!</i>
<i>Bridges</i>	<i>American Friends Service Committee</i>
<i>Blue Ribbon Youth Leadership Institute</i>	<i>Hands On Nashville</i>
<i>Coyce United</i>	<i>Power U</i>
<i>El Pueblo, Inc.</i>	<i>Young People's Action Coalition</i>
<i>Hispanic Interest Coalition of Alabama</i>	

**SOF Re-Granting Projects**

<i>Savannah Undocumented Youth Alliance</i>
<i>Activists with a Purpose Bridges</i>
<i>Fuerza Unida</i>
<i>STAY (Stay Together Appalachian Youth)</i>
<i>Youth Empowered Solutions</i>

**SOF Youth on the Move Advisory Committee**

<i>Tania Duran-Eyre, El Pueblo Raleigh, NC</i>
<i>Kathryn Kevin, El Pueblo Raleigh, NC</i>
<i>Austin Hayes Spartanburg, SC</i>
<i>Jessica Contreras, Latin American Coalition, Charlotte, NC</i>
<i>Valeria Medina, TUYA (Texas Undocumented Youth Alliance)</i>
<i>Keisha Campbell, Power U, Miami, FL</i>



**INTERNATIONAL COLLABORATION**

- Training & Workshops in Participatory Governance and Annual Fellowship Program with Partner: *The Fred Edwards Trust, headquartered in Perth, Scotland*
- Co-Anchor of SGEP Co-Op Econ Annual Gathering with Host & Partner: *Federation of So. Cooperatives (FSC) Planning Committee*
- Highlander Cooperation Texas Cooperation Texas Farmworker Assoc. of Florida Fund for Democratic Communities The Working World GEO/EDINA*

**NATIONAL NETWORKS**

- **MAG-NET** (MEDIA ACTION GRASSROOTS NETWORK)
- **UFWC** (US FED. OF WORKER COOPS)
- **SOLIDARITY ECONOMIES NETWORK**

**REGIONAL NETWORKS**

- **SGEP (SOUTHERN GRASSROOTS ECONOMIES PROJECT)**
- **UFWC National Conference** Led economics workshop
- **Jackson Rising: New Economies Conference** Planning Team, Support, Workshops

**Support of Net Neutrality and Broadband Access Campaigns with MAG-net partners:**  
*Alternate Roots, The Center for Artistic Revolution, Art is Change, Universidad Sin Fronteras, Appalshop, The Young People's Project, Durham Community Media, Working Films, The People's Channel, Concerned Citizens for Justice, Under the Hood Outreach Center, Partnership of African American Churches, Ohio Valley Environmental Coalition, Working Narratives*

**Hosted Southeast Media Justice Assembly with MAG-net, with support from: Art is Change, and SONG.**

**New Curriculum on Economics & Governance:** Highlander convened the leaders listed below to collaborate with the Highlander Education Team to develop this curriculum, pilot it in local communities and train trainers to multiply its use.

- Tania Duran-Eyre, Youth Engagement, El Pueblo
- Alicia Garza, Special Projects Dir., Nat. Domestic Workers Alliance
- Andrea Golden, Center for Participatory Change
- Jessica Gordon Nembhard, John Jay College, CUNY
- Marquez Rhyne, Cultural Organizer & Popular Educator
- Kate Shapiro, Development Coord., Southerners on New Ground
- Allyn Steele, Highlander Board V-Chair; ENGAGE
- Meg Wade, Training Mgr., Ctr. for Participatory Budgeting
- Ed Whitfield, Highlander Board; Co-Managing Dir., Fund for Democratic Communities
- John Zippert, Dir. Programs & Ops, Fed. of So. Cooperatives

Work On Alternative Economics and Participatory Governance, 2014

**ONLINE TOOLS**

SOUTHERN WOMEN'S LABOR HISTORY

**NATIONAL NETWORKS**

- **JOBS WITH JUSTICE (NATIONAL)**
- **UNITED ASSOCIATION FOR LABOR EDUCATION**

**REGIONAL NETWORK**

**JOBS WITH JUSTICE EAST TENNESSEE**

**State & Local Training Workshops**

- Knox TEACH
- Tennessee Education Association

with Partner: *Jobs with Justice, East TN*

**JwJ Debt Free National Campaign**

*Collaboration, Support, Curriculum Development*

**Southern Women Workers Labor School**

Partner: *United Assoc. for Labor Education*

Participating Organizations:

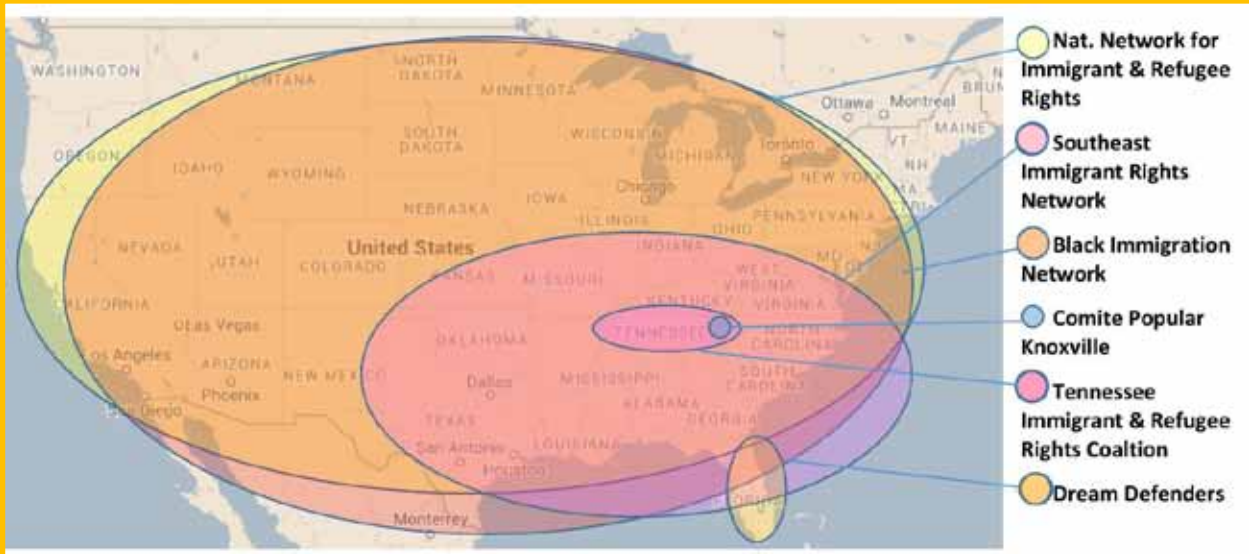
- National Domestic Workers Alliance
- OPEIU Local 2
- Teamsters Local 528
- Teamsters Local 377
- AFL-CIO Common Sense Economics
- APWU
- UFCW
- UFCW Local 881
- UFCW Field Education Center for Labor Research Studies, Florida Intl. Univ.
- CWA Local 222
- CWA Local 3808
- USW Local 1155
- USW Local 985L
- Valusia/Flagler Central Labor Council
- UC Berkeley School of Social Welfare

*Dignity in Schools Campaign*  
 Dept. of Labor Studies, Indiana Univ. South Bend  
*Jobs with Justice, Middle TN*  
 Knoxville-Oak Ridge Central Labor Council  
 Workers' Dignity

Work On Worker Justice, Governance and Economics, 2014



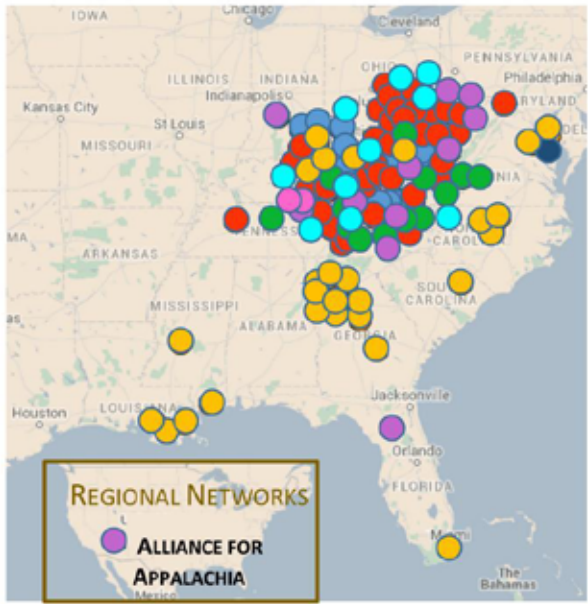
Work with Groups Focusing On Increasing Migrant Justice, 2014



**APPALACHIAN TRANSITION FELLOWSHIP (APPFELLOWS)**

**Host Organizations & Communities**

*Appalachian Citizen's Law Center, Kentuckians for the Commonwealth, Mountain Association for Community Economic Development, Community Farm Alliance, Fdn. for Appalachian Kentucky, Fdn. for a Healthy Kentucky, City of Benham KY, Kentuckians for the Commonwealth, Christian Outreach with Appalachian People, Opportunity Threads, Carolina Textile District, Appalachian Center for Economic Networks, Athens City Government OH, American Electric Power, Rural Action, ReUse Industries, Ohio University Voinovich School of Leadership and Public Policy, ACENet, University of TN Green Initiative, Socially Equal Energy Efficient Development, Appalachian Sustainable Development, Virginia Tech, Mid-Ohio Valley Regional Council, City of Spencer WV, Parkersburg Area Community Foundation WV, Ohio Valley Environmental Coalition, Mountain View Solar, The One Foundation, Greater Kanawha Valley Foundation, Charleston Area Medical Center Health System, Corey Brothers Inc., W. Virginia Center for Civic Life, WV Community Development Hub, WV Public Broadcasting, Alliance for Appalachia*



**AppFellows Regional, Gathering, Abingdon, VA**

*WV State Univ. Extension Office, Natural Capital Investment Fund, AARP, Pellissippi State Technical & Community College (PSTCC) Service Learning, PSTCC Good Food For All, PSTCC Edible Schoolyards, Second Harvest Food Bank, Knox Co. Food Policy Council, Knox Co. Health Dept., Lotts Creek Community School, Heifer International, High Co. Local Firs, Ascent Business Network, SEAM, Lynchburg College, Grow Appalachia, Radford Univ. School of Social Work, Blue Ridge Women in Agriculture, Plenty! Farm and Food Bank, Farm-to-Griddle Crepes, National Chefs Collaborative, TN/ACE and Fair Trade Appalachia, West End Farmers Market, ElderSpirit, and AppFellows Project Host Organizations*

**AppFellows Regional Gathering, Benham, KY**

*Kentucky Sustainable Energy Alliance, KY Solar Energy Society, Kentucky Conservation Committee, KY Dept. for Energy Dev. & Independence, Southern Appalachian Mt. Stewards, Appalachian Voices, and AppFellows Project Organizations*

**AppFellows Presentation at Appalachian Regional Commission**

**AppFellows Resource Committee**

*Jacqueline Arthur, Three Rivers Market TN; Michelle Decker, Rural Action Ohio; Rachel Edens, Tusculum College TN; Margaret Feierabend, Bristol City Council TN; Steve Fisher, Emory & Henry College VA; Robin Gabbard, Fdn for Appalachian Kentucky; Mary Hunt, Claude Worthington Benedum Fdn., Charleston WV; Marlo Long, BB&T Bank, Charleston WV; Sandra Mikush, Mary Reynolds Babcock Fdn, Winston-Salem NC; Stephanie Tyree, WV Community Development Hub.*

**ENERGY & EQUITY WORKSHOP**

*Community Power Network, Southeast Climate & Energy Network USCAN, Dream Defenders, Georgia Conference of Black Mayors, National Wildlife Federation, Partnership for Southern Equity, Georgia WAND, Georgia NAACP, Network Center for Community Change, Kentuckians for the Commonwealth, Kentucky Environmental Fdn., Midwest Clean Energy Enterprise, Appalshop, ORB Technologies, United Houma Nation, BIISCO (Bayou Interfaith Shared Community Organizing), Gulf Restoration Network, NAACP Environmental & Climate Justice Program, Hijira House, NC WARN, ReWeaving NC, Appalachian Voices, Woodberry & Assoc., Kingdom Living Temple, SOCM, Project South, Southern Energy Network, People Concerned about Chemical Safety, WV Community Development Hub, Southern Alliance for Clean Energy, NAACP NC*

**TRAINING & FACILITATION**

*Appalachian Public Interest & Environmental Law Conference  
Tennessee Fracktivist Conference*

Work On Transforming Exploitative Use of Resources, Governance and Economics, 2014



Left:  
90<sup>th</sup> Birthday  
celebration  
for  
Helen Lewis  
at 2014  
Highlander  
Homecoming.

## C A M P A I G N D O N O R S A N D P L E D G E R S

Frank & Margaret Adams  
Sameerah Ahmad, and the  
Cincinnati Interfaith Workers  
Ilene Alexander, *in memory of  
Hannah Stafford Alexander,  
Kathleen O'Donovan,  
Septima P. Clark*  
Jean Alexander & David Johnson,  
*in memory of Scott Bates*  
Henry & Tish Allen,  
*in memory of Howard Zinn*  
Michael J. Allen &  
Koharik Gumusyan  
American Federation of  
Teachers, AFL-CIO  
Lynda & Stephen Anderson  
Anonymous Foundation,  
*in honor of Henry Allen*  
Anonymous Friend  
Anonymous Friend  
Anonymous Friend  
Anonymous Friend  
Anonymous Friend  
Daniel Apfel  
Appalshop  
Monica Appleby

Aquila Fund of RSF Social Finance  
Matthew Armstead &  
Michael Pappano  
M. Atkinson  
Judy Austermilller &  
Warren Betty

Jinny & James Batterson  
Patricia Beaver  
Thomas Beckett  
Brenda Bell  
Llewellyn Bell  
Abigail Bereola

*"I felt I had found movement family the moment I stepped foot onto Highlander as part of the inaugural cohort of the Zilphia Horton Cultural Organizing Institute. I remember learning about the Highlander Folk School way back in junior high school and have been inspired, humbled and taught by Highlander's people, place and legacy in a profound way. Wherever I go in the world, there's a special home of my heart up on that hill in the foothills of the Smokies in Tennessee that I will always be committed to helping to build, grow and nourish."  
--- Jayeesha Dutta (New Orleans, LA).*

Janet Axelrod & Tim Plenk  
Hanan & Mohammed Ayesh  
Johnny Bailey  
Chris Baker & JoBeth Bradley  
Peter Bardaglio  
*in honor of Doug Gamble*  
Harriet Barlow  
Darien & Elizabeth Bates,  
*In memory of Scott Bates*  
Phoebe Bates,  
*in memory of Scott Bates*

Jules Bernstein & Linda Lipsett  
Charles & Margaret Biggs  
Charlie Biggs & Laura Howes  
Beth Bingman & Rich Kirby  
Anne Blakeney  
Karen A. Boldis  
Mary Bricker-Jenkins, *in honor of  
Pamela Jean McMichael & Family*  
Gary Briggs (*Bequest*)  
Ellen Brodsky & Ted Rybeck  
Mark Brooks  
Becky Brown  
Barbara Brundage & Max Aud,  
*in honor of Max Aud*  
Jane Covey & Dave Brown  
Joyce Brown  
Prudence Brown & Paul Stetzer  
Kim Buchanan  
Millie Buchanan  
Judi Burle  
John Burton  
Lynne Cabe  
Jean Calery  
Heidi Campbell  
*in honor of Allyn Steele*  
Sheldon Campbell

*"My support for Highlander stems from the gratitude I feel for the people who came before me in the struggle for all of our rights. My life, and that of my children, is immeasurably better because of the work that those people did who met and strategized and sang together at Highlander long ago. Is it coincidental that Eli is finding some of his most important work ever in teaching in a New York City prison, or that Stella has decided that a big part of her work at Smith College will be the ethnomusicology of freedom struggles? I think not. Yes, we raised them right, but we wouldn't have had what we needed to do that without the inspiration and connection that Highlander provided to us. It's only fair for us to support that institution that has supported us for so long and well. It's personal, and it's political, of course!"  
--- Janet Axelrod (Cambridge, MA)*



Kathleen Campisano & Sarah Reece  
 Kathryn Canan  
 André Canty  
 Guy & Candie Carawan  
 Heather Carawan & Andrew Bacom  
 Jim Carlson  
 Clay & Susan Carson  
 Courtney Cazden  
 Mary Cerullo  
 Judy Chambliss & Jack Fowler  
 Anne Chenoweth &  
 Woody Deutsch  
 Danny Chiotos  
 Jenn Christian  
 Marie Cirillo  
 Don Clelland & Wilma Dunaway  
 Tammy Campbell Cline & John Cline  
 Jane Coleman  
 Marian Colette & Dal Macon  
 Susan Compton  
 Arthur Cornfeld,  
*in honor of Pete Seeger*  
 Dan Cornfield & Hedy Weinberg

*"'Generations to come' was probably never far from the minds of the civil rights workers, freedom fighters, organizers and activists who came through Highlander's doors, looking for solidarity and support, tools and training, nurturing and strength for the journey. Not just for us, but for our children, and their children --- to 7 generations and beyond. I'm happy to give what I can to be a part of this unbroken legacy of liberation."*  
 --- Kathie deNobriga (Atlanta, GA)

Meg Coward & Sarah Sax  
 Thomas Coward  
 Linda Cronin-Gross  
 Jessica Crosby-Pitchamootoo  
 Pam David  
 Lee & Veronica Davis  
 Helen Demong  
 Anne DeMuth & Mark Hodge  
 Harriet Denison  
 Kathie deNobriga  
 Kim Diehl &  
 Alyce Gowdy Wright  
 Anna DiStefano, *in honor of*  
*Fielding Graduate University*

*"Highlander, due to its longevity and its centrality to so many historical struggles in the South, seems to us to stand at the heart of the community of local and regional groups which have been organized in the last couple of decades to further the ongoing struggle for liberation, to transform our region and the entire US. We donate to Highlander's Generations to Come Capital Campaign to be a part of Highlander's future."*  
 --- Rich and Lucy Henighan (Seymour, TN)

Dolphin Foundation  
 Dennis Doros, *in memory of*  
*Kathleen Conwell Collins Prettyman*  
 David Doty  
 Cam & Susan Duncan  
 Tania Duran-Eyre  
 Jayeesha Dutta  
 Janis & Tom Dutton  
 Jackie Eder-Van Hook  
 Julie Olsen Edwards  
 June Edwards  
 David Ellerman  
 Walter Enloe &  
 Katherine Mathis Enloe,  
*in honor of Guy & Candie Carawan*

Lucinda Ensworth  
 Winifred Evans, *in memory*  
*of Emory G. Evans*  
 Stephanie Fein &  
 David Lakes,  
*in honor of Larry Fein*  
 Fielding Graduate  
 University  
 Stephen Fisher &  
 Nancy Garretson  
 Jenn Fishmann  
 Eldora Fitzsimmons  
 Karen & Michael Folk,  
*in memory of*  
*Martha Liveright Folk*  
 Ford Foundation  
 Tara Foster  
 Daniel French & Rosann Tung  
 Donna & Steven Friedman  
 Amy Galland  
 Dee & George Gamble  
 Doug Gamble & Nina Gregg  
 Lynne Gerber

*"Nothing makes me feel more plugged in and optimistic than the chance to support Highlander and its future. I'm lucky, and proud, to be a part of this impressive family. Such strong roots; such wide branches!"*  
 --- Peter Wood (Boulder, CO)

Gordon & Judy Gibson  
 Tracey Gilbert  
 Mickey Gillmor & Henry Kahn  
 Millie Gimmel & Paul Laudeman  
 Sandra Godwin  
 Steve & Monique Goldstein  
 Angelique Gonzales  
 Jan Goodman & Jerry Manpearl  
 Laurel Goodrich  
 Marvin Goodstein  
 Sara Gould & Rick Surpin  
 David Graybeal  
 Mary Ellen Griffith  
 Wendy Griswold  
 Barbara & Douglas Hadsell

*"Highlander's historic role in the civil rights movement is well known. But Highlander has not rested on their laurels. Don and I recognize the vital importance of the continued community building, leadership development, and social justice work at Highlander. Improvements to the Highlander campus are critical to supporting the mission and vision."*  
 --- Ruth and Don Horton (Knoxville, TN)

Betty Jean Hall,  
*in memory of Lewis Sinclair*  
 Jim Harb  
 Jean Hardisty  
 Lyn Hartman & Tina Shepardson  
 Diana Haskell  
 Jean Haskell  
 Ash-Lee Woodard Henderson  
 Doug Hendren  
 Rich & Lucy Henighan  
 Sherry Herbers, *in honor of the*  
*Women Staff of Highlander*  
 Betty Hickman  
 Mark Hicks  
 Isabel Johnson Hiss Estate,  
*in memory of Alger Hiss*  
 William Hofmeister  
 Lorraine Honig  
 Don & Ruth Horton  
 Claudia Horwitz

Barclay & Kerstin Hudson, *in honor of Margo Okazawa-Rey*  
 Clinton Huey  
 Erica Hunt,  
*in honor of Hubert & Jane Sapp*  
 Gregory & Maria Jobin-Leeds  
 Deborah Johnson,  
*in memory of Jane Collins*  
 Rachel Johnson

*“Highlander Center has been a beacon of justice shining across the South for generations. It was an honor to be part of a team raising the resources that will enable new generations of justice fighters to sit in those iconic rockers, strategize and sing and share, and settle into a comfortable night’s rest before rising and fighting on.”*

--- Millie Buchanan, Campaign Committee  
 Board Vice-Chair, 2011-2012  
 (Asheville, NC)

Jenny Johnson-Riley  
 Donald Jones  
 Kenneth Jones  
 Rebecca Jones  
 Kara Keeling  
 Alissa & Neal Keny-Guyer  
 Amelia Kirby  
 Paul Kivel & Mary Luckey  
 Michael Knapik &  
 Patricia O'Connor  
 Barbara Knecht  
 Sue Ella Kobak & Art VanZee  
 Mari Kong  
 Carol Kraemer & Jan Straub  
 William Lana  
 John Lang  
 Joyce Lashof  
 Diana Marie Lee

*“The work you do now remains a powerful inspiration to me and I share that with my own students, colleagues and friends. Often, it is easier to see the right way ahead than to do anything about making it happen. Highlander offers hope and vision way beyond the locality it sits in. I am far away but still find strength knowing others are at work, making change, staying strong, building futures through what is done today.*

*I donated because I wanted to help in whatever tiny way I could and know it is paltry compared to the investment I have found in Highlander.”*

--- Peter Shukie (University Centre at Blackburn College, UK)

Jos Leenhouts & Peter Sluiter  
 Rose Levy  
 Elsa & Philip Lichtenberg  
 Tyra Lindquist,  
*in honor of Dr. Larry Roper*  
 Live to Give Charitable Trust Fund  
 Art & Sue Lloyd  
 Leslie Lowe  
 Brinton Lykes  
 Beauvais Lyons & Diane Fox  
 Paul Mack, *in memory of Paolo Freire*  
 Kathleen Maloy, *in memory of Amelia Jane Altz Maloy*  
 Philip Mangis  
 Annette Marquis  
 Gilbert & Raeanne Martinez  
 Martha Matsuoka  
 Mary Beth Maxwell, *in honor of Pam McMichael & Highlander*  
 Virginia & Lester McClain  
 Mary McClymont  
 John McCutcheon  
 Margaret McFadden  
 Brian McInerney  
 Pam McMichael  
 The Geneviève McMillan-Reba Stewart Foundation  
 John McNair  
 Julie McVeigh  
 Meta Mendel-Reyes  
 Barbara Meyer  
 Nancy Meyer & Marc Weiss  
 Beth Meyerowitz, *in honor of Doug Gamble & Nina Gregg*  
 Madelyn Miescke,  
*in honor of Jenn Fishmann*  
 Randall Miller, *in honor of Sister Mary Lanahan, Dr. Wayne Flynt, Raymond Arsenault, Charles Reagan Wilson, Dr. Claire Renzetti, Dr. Gary Nash,*

*Emma Lapsansky-Werner, Joel Katz, John David Smith, Nikki Taylor, Paul Cimbala, Pete Seeger, Philip Lapsansky, Stacey Robertson, Vernon Burton*  
 Stephen Miller  
 Al & Carroll Minor  
 Jackie Mirkin & Edie Daly,  
*in honor of Pam McMichael*  
 M. Hayes Mizell  
 Catherine Mooney  
 Alexander A. Morese  
 Mary Morgan, *in memory of Fannie Lou Hamer*  
 Barbara Mott, *in memory of Grace Jarnagin Cooley; in honor of John Frederick Mott, Pat Fitzsimmons & Mark Conway*  
 Kenneth Mountcastle, Jr.  
 John & Lucia Mudd  
 Laurie Mufson, *in honor of Aleine Austin Cohen*  
 Polly Murphy & Todd Shelton  
 Suse Nakata  
 Margaret Newell  
 Mary Newman  
 Shawn Newman  
 Kay Newton  
 Carol Nickle  
 Katherine C. Oates &  
 Dr. Daniel B. Murrey  
 Jerry O'Barr  
 Jane O'Grady,  
*in honor of Joyce Miller*  
 Margo Okazawa-Rey,  
*in honor of TLSJ Program at Fielding Graduate University*  
 Brigid O'Keane,  
*in honor of Allyn Steele*  
 Anne Olson  
 Diana Onley-Campbell  
 Larry Osborne  
 Tomas Östlund and The Staff at  
 Folkbildbubgrådet, *in honor of Guy & Candie Carawan*  
 Emil Paddison  
 John Parker  
 Jardana Peacock  
 Rosalyn Pelles  
 Robert Pew



*"Highlander became a permanent and positive part of my life nearly 50 years ago when I first learned of its work and later became a regular visitor and participant. The world has changed/is changing and Highlander has effectively changed with it, always striving for it to be a better place. Thank you for letting me be a part of this ever-evolving movement for good."*

--- Betty Jean Hall (Washington, DC)

Thomas Phillips &  
Stephanie Ericson  
Mimi Pickering  
George Pillsbury & Mary Tiseo  
Ben Poage  
Rachel Pohl  
Ellyn Polshek  
Charles Price  
Public Welfare Foundation  
Margaret Quinn, *in memory of*  
*Eva Buiatti*

Andrea Rabinowitz  
Eric Rabinowitz  
Randy Raduege &  
Tammy Stoecker  
Nitika Raj  
Amelie Ratliff  
Linda Ray  
Robert Raymond  
Melody Reeves &  
Chuck Shuford  
Cynthia Renfro  
Kay Reynolds

Marquez Rhyne, *in honor of*  
*Michaela Camara Bost,*  
*Yophi Adia Bost*  
Charles (Bud) Richardson  
Nancy Richardson &  
Elaine Huber,  
*in honor of Amelie Ratliff*

Wilson Riles &  
Patricia St. Onge  
Kate Rinzler (*Bequest*)  
Patricia A. Robinson  
Maria Rodriguez  
Anne & Calem Romasco  
Rachel Rudi  
Samuel Salkin, *in honor of*  
*Eva Meredith Hagenhofer*

Emily Satterwhite &  
Philip Olsen  
Steve & Honey Schnapp  
Fred & Phyllis Schoen  
Gary Schwartz  
Pete & Toshi Seeger  
William Seraile  
Jim Sessions & Fran Ansley  
Lynn Shoemaker  
Garrett & Sabrina Shrader

Peter Shukie  
Roy Silver  
Ian Simmons  
Margaret Skinner  
William & Ursula Slavick  
Michael & Judy Smathers  
Ada Smith  
Barbara Ellen Smith  
Lora Smith  
B.J. & Paul Snow,  
*in honor of Frank Adams*

*"The Highlander Center has played an important role in my life; we have brought dozens of young religious and community leaders from across the country there over the years; and my own kids had the chance to collect chicken eggs and learn about the role children have played in history at Highlander last summer. It serves as a space where grassroots leaders committed to social change can meet each other, exchange experiences, and strategize on how to build a social movement for these difficult times."*

--- Liz Theoharis (New York, NY)

Patricia Soung  
Merlin Southwick  
Margot Spore  
Ann Sprayregen  
Murphy Stack

*"Highlander means to me that the promise of the Constitution with its amendments for equality for all is a reality; Highlander means that all, citizens and recent immigrants, have protection from bigotry and discrimination. Highlander means to me that America is color blind when the rights of all regardless of sexual orientation is respected and protected."*

- William Seraile (New York, NY)

Burke Stansbury &  
Krista Hanson  
Allyn Steele  
Byron & Lee Stookey  
Jenn Summers  
Isis Tafari  
Liz Theoharis  
Charlie & Laura Thomas,  
*in honor of Frank Adams*  
Three Rivers Market

Julie Torgeson  
Mary Treanor  
Trillium Asset Management  
Dave Underhill  
Cathy Underwood &  
Nancy Levit  
United Food & Commercial  
Workers, AFL-CIO  
Marian Urquilla  
Marsha & Terry Uselton  
Liz Veazey  
Skyler Vilt  
Jason Von Kundra  
Dave Walker  
Sam Walker  
Carla Wallace  
Bruce Ward  
Shelley Wascom  
Hollis Watkins  
Annetta Watson  
Jinx Watson  
Maggie West &  
Hudson Vaughan, *in honor of*  
*Alex Biggers & Audrey Boyles*  
Chris Westcott  
Jennifer Whitney  
Amanda Wiles  
Anderson Williams  
Erven & Elnora Williams,  
*in honor of Elandria Williams*  
Susan Williams  
Thomas Williams  
Will Wilson  
Peter Wood, *in memory of*  
*Brooke Hopkins,*  
*Larry Goodwyn*  
Diana Wu  
Robert Zevin  
J. Nicholas Ziegler, *in memory of*  
*Jerome M. Ziegler*  
Jerry & Pat Ziegler (*Bequest*)  
Angela Zimmerman

*"Just being at beautiful Highlander makes people feel stronger. As times change the social justice programs created by Highlander staff remain ever more important. I wish there were more Highlanders scattered around the country."*

--- Andrea Rabinowitz (Seattle, WA)



***“Year after year community leaders, organizers, artists and scholars, working for social and economic change in their communities and workplaces, gather at Highlander. They come to strategize, study, plan, and learn from each other. They come to build and nurture social justice movements. Highlander is a center for change. This has been true since its beginning and continues to today. We continue to build it for generations to come.”***

*--- Roz Pelles, Highlander Board Chair, 2010-2012*

**Our heartfelt gratitude to the following for their generosity, time and service  
to the *Generations to Come* Campaign:**

**Campaign Steering Committee:** Henry Allen (Chair), Millie Buchanan, Doug Gamble, Diana Marie Lee, Rosalyn Pelles, Elnora Williams, Pam McMichael (Executive Director).

**Campaign General Committee:** Frank Adams, Mary Thom Adams, Harriet Barlow, Pablo Eisenberg, Robert Ben Garant, Kathleen Maloy, Amelie Ratliff, Jim Sessions, Marian Urquilla, Alex Willingham.

**Campaign Honorary Committee:** Deepak Bhargava, Guy & Candie Carawan, Clayborne Carson, John Cavanagh, Donna Chavis, Charles Cobb, Dorothy Cotton, Marian Wright Edelman, Bill Fletcher, Eric Foner, Sara Gould, Sarita Gupta, Charis Horton, Thorsten Horton, Mac Legerton, Helen Lewis, Honorable John Lewis, Cynthia Renfro, Richard Trumka, Hollis Watkins. In Memoriam: Scott Bates, Pete Seeger, Toshi Seeger.

**Highlander Campaign Staff:** Melody Reeves (Campaign Coordinator), Barbara Mott (Campaign Assistant).

**Campaign Consultant:** Peggy Mathews.

**Highlander Staff:** Johnny Bailey, Esmeralda Baltazar, André Canty, Thomas Coward, Tony Denton, Matt Griffin, Betty Hickman, Stephanie McAninch, Tufara Waller Muhammad, Barbara Mott, Kierra Sims, Elandria Williams, Susan Williams, Will Wilson, Elizabeth Wright.